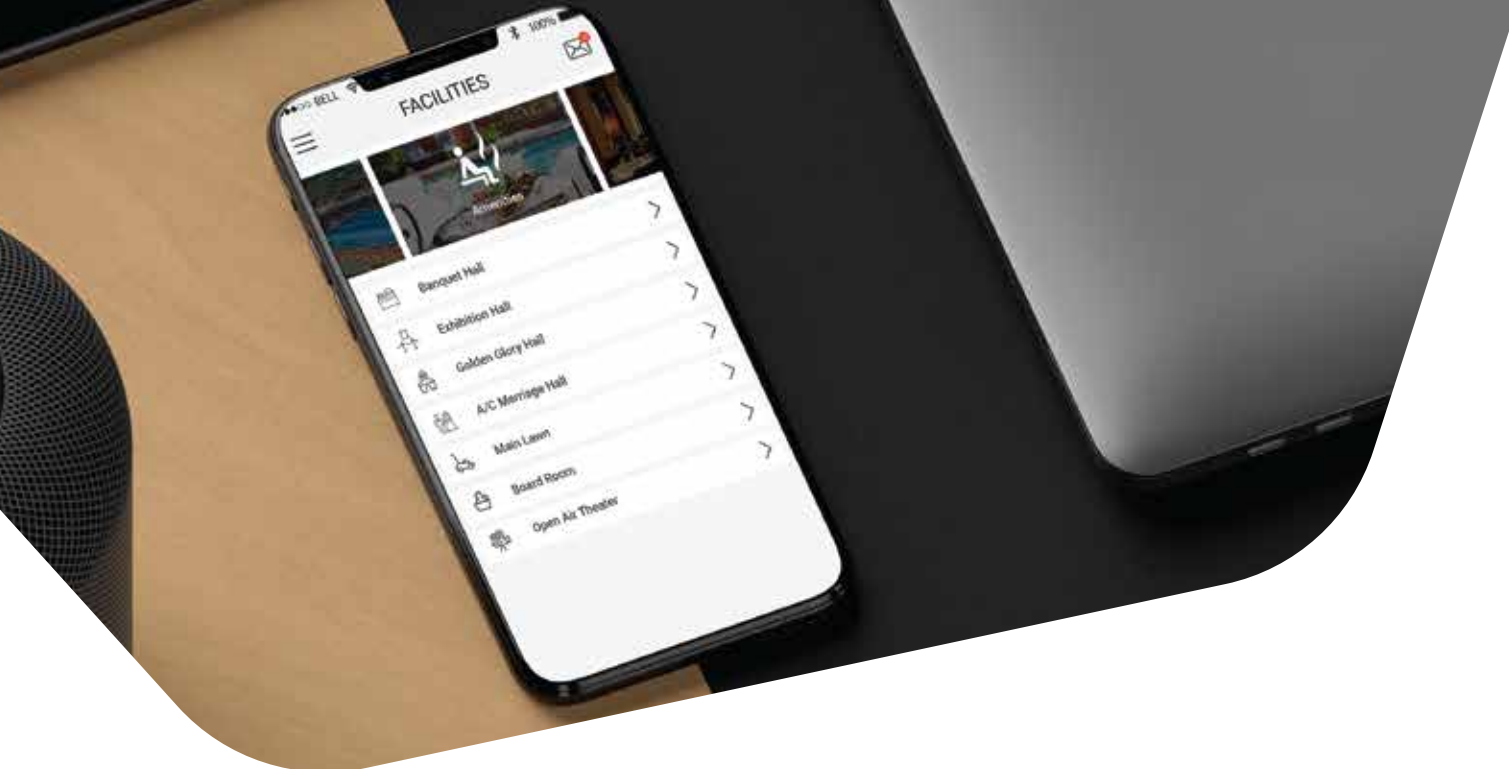


A product by KCS



Fully Automated and Integrated  
Club Management Software

[www.ecube.club](http://www.ecube.club)



## Product Description

### *Simplify Your Club Operations and Amplify Your Revenue*

eCube is a web based application offering a complete collaboration suite of fully integrated software for seamless management of all your club activities. Now, no more jumping from one application to another, get access to a complete automation of end-to-end operational functionality as well as administrative work to manage your club efficiently and amplify your revenue while enhancing customer experience.

Ideal for residential or leisure clubs, resorts, and large recreational centers, it is highly scalable and has a modular approach with intuitive user navigation features. Automate time-consuming tasks right from membership management, restaurant POS, up to recurring payments and financial reporting effortlessly.

Categorized into various modules, it is a truly integrated, multi-vendor, single-source solution enabling clubs to take their business to new heights by bringing all the aspects together at one easy place.







## eCube Offerings

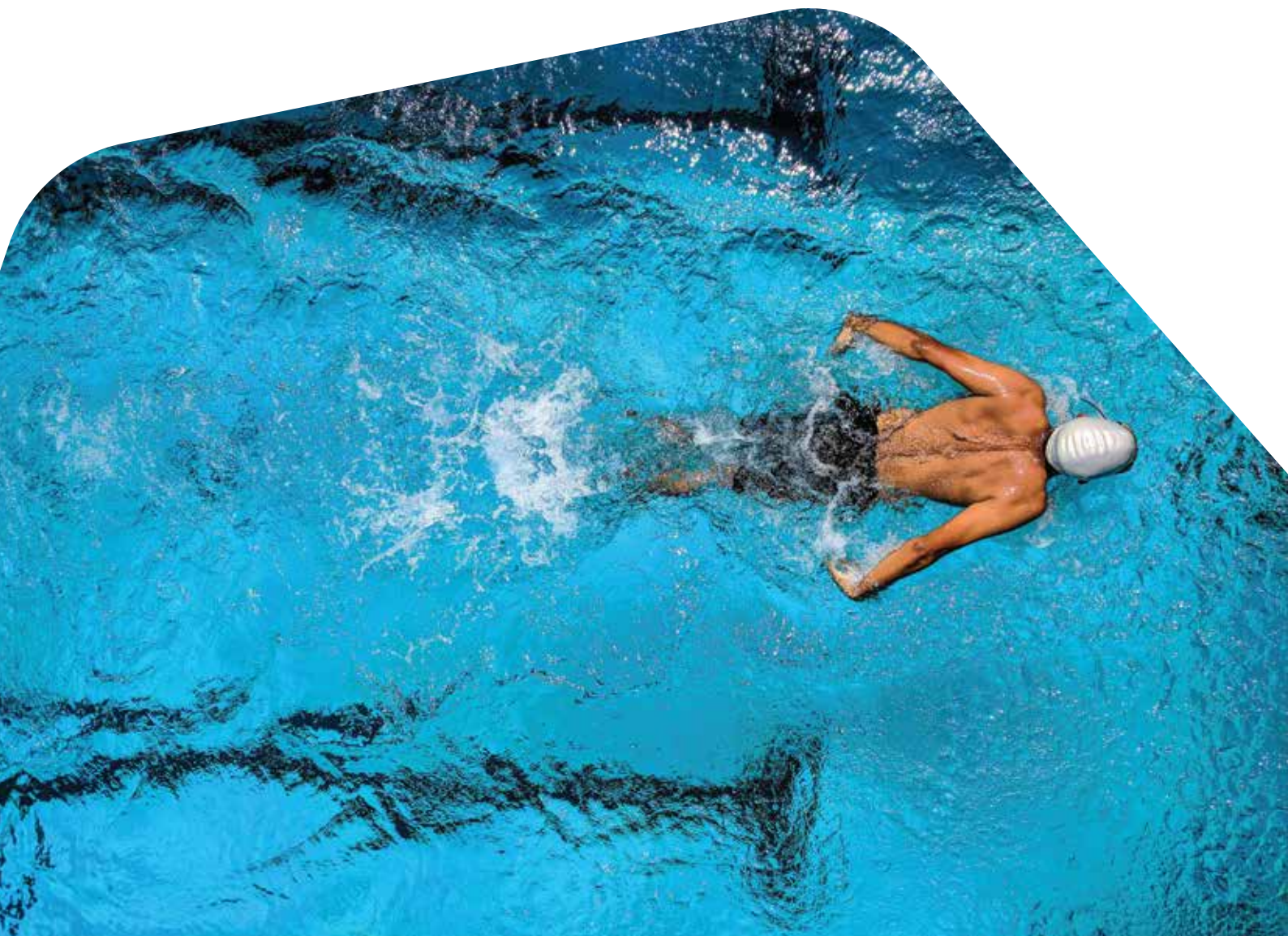
Automate the entire gamut of club system and streamline your operations with eCube which is divided into two versions for a more cohesive experience. Customized as per client's requirements, you can now create a seamless customer experience and get the most out of your software.



### **eCube Enterprise**

*Leisure Club Management*

**eCube Lite**  
*Residential Club Management*





## **eCube Enterprise** - Leisure Club Management

If you are a large club having thousands of members and a wide range of amenities as well as facilities, eCube Enterprise – Leisure Club Management Software is the perfect solution for you.

Based on the turnkey approach, it allows seamless as well as efficient management of club members, operations, schedule classes, and point-of-sale transactions while providing members with the ease of online registration and payments. A highly scalable, feature-packed, and flexible software, eCube is ideal for fitness clubs, yoga studios, wellness centers, resorts, recreational centers and large leisure clubs.

### **eCube Modules**



#### ***Base Module - The Membership Management Suite***

- Membership Management
- Corporate Member Management
- Package Management
- Invoice and Receipt Management
- Advanced Search
- Member Tagging
- Bulk and Extra Charges
- MIS Reporting
- Advanced Analytics
- Activity Log and System Logs
- Club Activity Management
- Digital Signature, Biometric and Camera Integration
- RFID Integration



## ***Point of Sale Services Management***

Service Zone Specific Views

Member/Sub Member and Guest Gate Entry

Payment Credited to Member Account-Monitored through Credit Limit

Gate Exit

Reports

## **eHSM Module**

### ***Restaurant Management***

Food & Beverages Management Solution

F&B – Point Of Sale Module (Touch POS/Manual)

MIS Reports

### ***Inventory Management Solution***

Item Wise Stock Management

MIS Reports

### ***Room Front Desk Management***

Room Configuration

Room Reservation

MIS Reports





## **Member Profile Management**



### **Web Module**

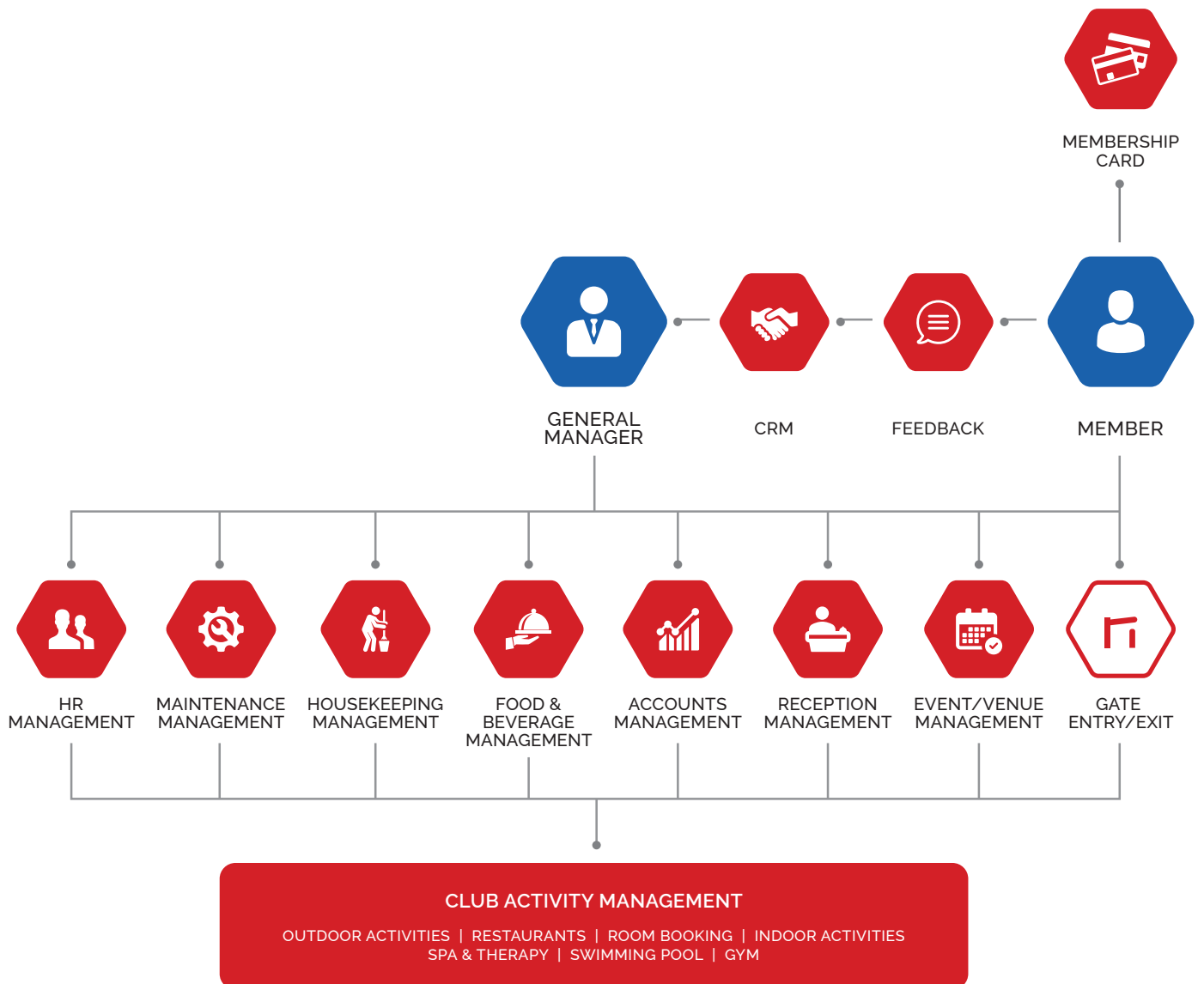
Dashboard  
Membership Plans  
Services Summary  
Member Profile/Activity/Ledger  
Online Payment  
Invoices and Receipt Management  
Online Room Booking  
Online Movie Booking

### **Mobile Module**

Member Profile Management  
Edit/Delete Profile  
Account transactions and Payments  
Events/Promotion  
SMS/E-mail Notifications  
Online Room Booking  
Online Movie Booking



## E-Cube Enterprise Flow





## eCube Lite - Residential Club Management

eCube Lite is a fully integrated club management solution that utilizes best-in-class core modules enabling residencies or townships to coordinate and manage their in-house club.

A user-friendly and flexible user interface ensures personalized member history and activity tracking. It helps societies to manage their daily club operations easily, quickly and in a more affordable way. Clients can also customize the solutions by combining the modules as per their requirement. Access to the club from anywhere anytime has never been this easy! Keep your members engaged with daily club activities 24 hours a day and 7 days a week with our seamless software solution.

### eCube Modules



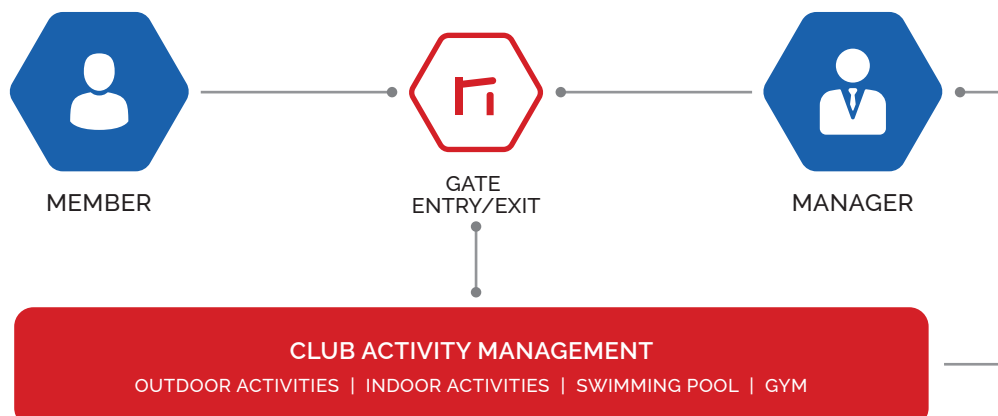
#### **Base Module** - *The Membership Management Suite*

Membership Management	MIS Reporting
Package Management	Advanced Analytics
Invoice and Receipt Management	Activity Log and System Logs
Advanced Search	Club Activity Management
Member Tagging	Digital Signature, Biometric and Camera Integration
Customer Relationship Management	RFID Integration

#### **Point of Sale Services Management**

Service Zone Specific Views  
Member/Sub Member and Guest Gate Entry  
Payment Credited to Member Account-Monitored through Credit Limit  
Gate Exit  
Reports

#### **E-Cube Lite Flow**







# eCube implementation approach

eCube is based on a modular approach coupled with an intuitive user navigation. A total turnkey and customer-centric approach helps us incorporate greater efficiencies throughout the run of the product, flexibly managing any hiccups and precisely managing hardware integrations. We perform through site survey before giving any expert solutions so that you get more than what you expect as per your requirements.

## eCube Integration



### ***Feature Integration***

- SAP/ERP/Tally Integration
- RFID Card Integration
- Access Control Integration
- Biometric Integration
- Turnstile Integration
- Computer Telephony Integration (EPBX)
- Kiosks and Touch Point Integration



### ***Technology Integration***

- .NET Framework 2.0
- MS SQL Server 2005
- Web Based Platform
- Android and iOS Native App



\*Support: 24x7 and Hand Holding with a complete Onsite Installation, Training & Support Documents.





# Why use eCUBE?



## **Operational Efficiency**

---

- o Feature-packed eCube Club Management Software makes operations a breeze.
- o A single-point dashboard view makes every day activities/operations efficient.
- o Automated software makes handling various tasks as well as manual interaction with the members easy.
- o Scalable and intelligent features to generate real-time reports using business analytics (BI) with a graphical view.
- o Management software helps amplify revenue and is perfect value for money.
- o CRM application feature enables centralised club promotions..



## **Cost Saving**

---

- o It reduces material and cost pilferages by enabling a better planning of the required club inventory and resource management.
- o It allows expense forecasting with the use of business intelligence/analytics.
- o It helps reduce manpower for mundane accounting and operational processes and helps automate the same.



## **Hand Holding**

---

- o The eCube team enables complete transition of the club operations management.
- o Our Support team provides 24/7 services for all technical and operational issues as well as training to the staff to use the software on every day basis.
- o The software supports a big part of the automation thus helps reduce manpower.
- o The business analytics embedded in the software enables the management with expense analysis as well as provides insights to the club operations efficiencies.



## **Support Services**

---

- o We provide 24x7 technical support services.
- o Comprehensive range of managed IT support services.
- o We have in-house professionals that leverage agile technical expertise.
- o Solutions that help you enhance your club IT infrastructure.



## Our Clientele







Thank  
You

